

iCD. GmbH
Augustinusstr. 9d
50226 Frechen / Germany
TEL +49-2234-96634-0
FAX +49-2234-96634-90
e-mail: info@icd.biz
web: http://www.icd.biz



DMS Document Management System

DMS from iCD. brings a new quality to document management - secure and central storage with fast retrieval and a quick and easy to learn user interface.

Apart from its integration into our own products LABS/Q®, LABS/DS and VALIDAT 2005 we are offering our **DMS** also for custom implementations.

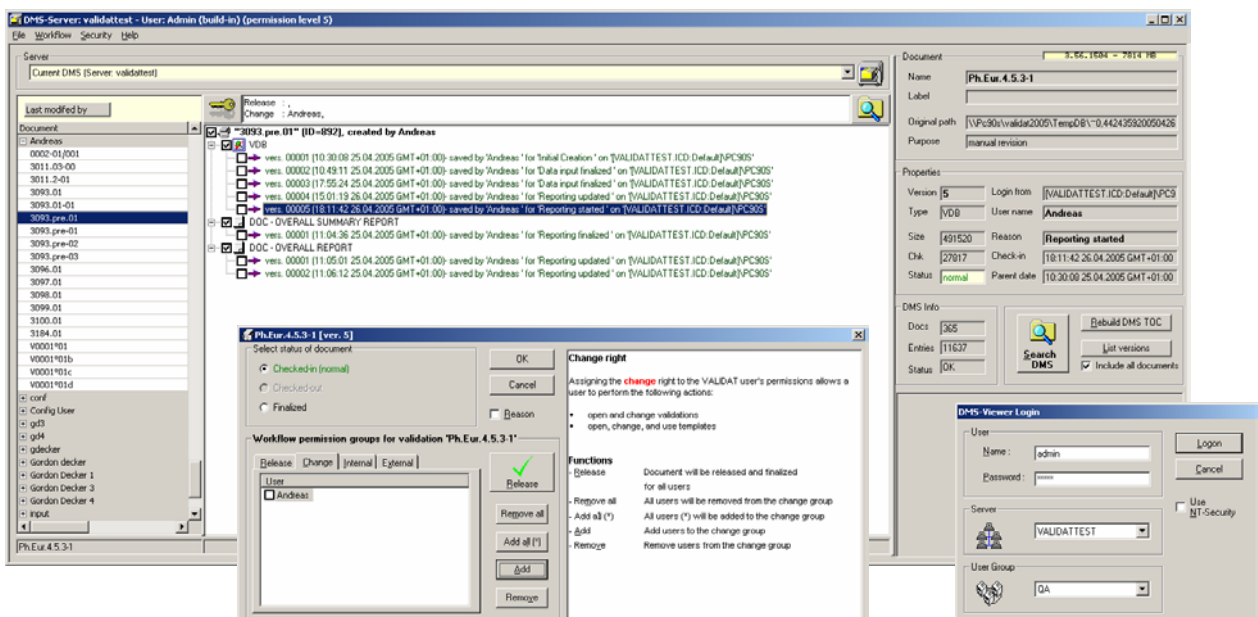
21 CFR Part 11 Compliance

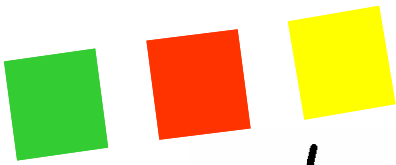
The requirements of the 21 CFR Part 11 can also be implemented for existing software products by means of our modules for user management and audit trail.

Our **DMS** was designed for high data throughput, secure data transfer (checksum and transaction protected) and easy operation.

Optional Workflow

The optional workflow module adds individual access rights to implement workflows access policies in regulated environments.





Results

Description

Revision database for versioned storage of documents, graphics or general binary data;
Storage with freely configurable document properties, transaction and checksum protected.
Optional modules for user management and audit-trail available.

Retrieval

Data retrieval

Data retrieval via browser or interactive search engine; integrated preview of known data types (text and graphic formats) with optional local storage (export) and printout.

Installation

Installation and configuration

Via graphic installer (database installation via client PC), installation logs; archiving of BLOBs (Binary Large Objects), transparent access of archived data for DMS-clients.

Security

21 CFR Part 11

User management, audit-trail, checksum protected data transfer, electronic signature, versioned storage.

Workflow with DMS-Viewer (optional)

based upon ORACLE SQL Server 9.2 and higher

System environment

Operating Systems

Microsoft Windows 2000 SP4, Windows XP SP2, Windows 2003 SP1

Scalability

Terminal Server Support

Microsoft Windows Terminal Server (Windows 2000 and 2003) and Citrix Metaframe

Supported databases

Microsoft SQL Server 2000
Microsoft SQL Server 2005
ORACLE SQL Server 9.2 and higher